

CHILDREN & YOUTH SECTION

ENTRIES CLOSE: Poultry & Cattle - 3rd November
Photography - 7th November
Stop Motion Animation - 7th November
All other Sections - 14th November

LOCATION: Scout Hall (Cooking) Waimea Lounge (Art & Handcraft & photography), Horticultural Shed

ENTRY FEES: Free Entry to all Classes. Children entering these classes will receive a complimentary one day gate pass

DELIVERY OF ENTRIES:

Photography & Stop Motion Animation: Friday 7th November or earlier to the A & P Office

Art and Handcraft: Deliveries accepted at Waimea Grandstand on Tuesday 18th and Wednesday 19th November between 10am and 6pm or earlier to the A & P office.

Cookery: Should be delivered to the Scout Hall by **5pm on Friday 21st November** as judging of these sections will take place at 6pm - (*Cookery Items must be covered in a clear cover*).

Horticulture & Floral Art: Should be delivered to the Horticulture Shed by **5pm on Friday 21st November** as judging of these sections will take place at 6pm

AWARDS FOR SECTIONS:

Ribbons for prize placings. Special awards and trophies listed in each section. **Trophies, Rosettes and Ribbons cannot be uplifted until exhibit collection on the Sunday after 3.30pm**

Horticulture & Floral Art

Pre School/Primary School Vegetables

Class 100 Any Vegetable

Intermediate & Secondary School Vegetables

Class 101 Any Vegetable

Class 102 Decorated Garden Sign

Pre School Floral Art

Class 103 Sand Saucer

Not more than 20cm diameter

Class 104 Small Yoghurt Pottle of Flowers

Class 105 Painted Rock/Stone

Class 106 Miniature Garden

Not more than 30cm diameter

Primary School Floral Art - Years 1, 2 & 3

Class 107 Cress Head Novelties

Class 108 Sand Saucer

Not more than 20cm diameter

Class 109 Small Yoghurt Pottle of Flowers

Class 110 Painted Rock/Stone

Class 111 Painted Stone People/Animals/Insects

Class 112 Miniature Garden

Not more than 30cm diameter

Primary School Floral Art - Years 4, 5 & 6

Class 113 Cress Head Novelties

Class 114 Sand Saucer

Not more than 20cm diameter

Class 115 Small Yoghurt Pottle of Flowers

Class 116 Miniature Garden

Not more than 30cm diameter

Class 117 Painted Rock/Stone

Class 118 Painted Stone People/Animals/Insects

Intermediate & Secondary School Floral Art

Class 119 My Favourite Container of Flowers

Class 120 Miniature Garden

Not more than 30cm diameter

Class 121 Sand Saucer

Not more than 20cm diameter

Class 122 Decorated Footwear

Shoe, Boot, Sandal or Jandal, no restriction on colour or material additions however flowers or greenery must be used.

Class 123 Painted Rock/Stone

Class 124 Painted Stone People/Animals/Insects

Open Section

Class 125 Make a scarecrow

Open to all age groups. Can be family or Class activity. Does not have to be traditional. To be displayed outside the hall.



Art

All work must be 2D and must be able to be Hung

Pre-School Art

No Bigger than A3

Class 200 Painting - Any Theme

Class 201 Drawing - Any Theme



Primary School Art

Class 202 2D Animal Portrait (any medium) Years 1 & 2

Class 203 Flora (Flowers, trees, vegetables etc, any medium) Years 1 & 2

Class 204 2D Animal Portrait (any medium) Years 3 & 4

Class 205 Flora (Flowers, trees, vegetables etc, any medium) Years 3 & 4

Class 206 Scapes - land, sea or city (any medium) Yrs 5 & 6

Class 207 Graphic Design Poster for A & P Show Yrs 5 & 6
A4 size, using IT, winning entry will be used to promote the next show.

Class 208 Any Style (any medium) Years 5 & 6

Class 209 Drawing (pencil, chalk, Charcoal, Ink) yrs 5 & 6

Outstanding Art Exhibit – Primary

Intermediate School Art

Class 210 Drawing (can be cartoon)

(Pencil, Chalk, Charcoal, Ink etc)

Class 211 Painting (any style)

Class 212 Any other medium

Outstanding Art Exhibit - Intermediate



Secondary School Art

Class 213 Drawing (can be cartoon)

(Pencil, Chalk, Charcoal, Ink etc)

Class 214 Painting any style

Class 215 Any other medium

**Outstanding Art Exhibit - Secondary
Hall & Scott Trophy - Most Outstanding Art Exhibit**

Handcraft

All work must be portable i.e. nothing should fall/break off it when transported.

Pre-School Handcraft

Class 300 Any craft work

Primary School Handcraft Years 1 & 2

Class 301 Woolcraft and yarn craft

Class 302 Any sewing or Embroidery item

Class 304 Object made with any modelling clay/dough/plasticine etc

Class 305 A Farm Animal or farm implement made from Recycled Materials

Class 306 Any Craft Work not mentioned

Primary School Handcraft Years 3 & 4

Class 307 Wool or yarn craft, eg weaving, felting, knitting, crochet, macrame

Class 308 Any Sewing or Embroidery item

Class 309 Lego - own creative design

Class 310 Object made with any modelling clay/dough/plasticine etc

Class 311 A Farm Animal or farm implement made from Recycled Materials

Class 312 A Party Invitation

Class 314 Any Craft Work not mentioned

Primary School Handcraft Years 5 & 6

Class 315 Wool or yarn craft, eg weaving, felting, knitting, crochet, macrame

Class 316 Embroidery/Needlework

Class 317 Any Sewing item including clothing

Class 318 Object made with any modelling clay/dough/plasticine etc

Class 322 Junk into Funk

Class 323 Any other craft not mentioned

Outstanding Handcraft Exhibit - Primary



Intermediate School Handcraft

Class 324 Any Sewing item including Clothing

Class 325 Wool or yarn craft - eg weaving, felting, knitting, crochet, macrame

Class 326 Embroidery/Needlework

Class 328 Junk into Funk

Class 329 Jewellery Item

Class 330 An object made of metal, wood or clay

Class 331 Any other craft not mentioned

Outstanding Handcraft Exhibit - Intermediate



Secondary School Handcraft

Class 332 Junk into Funk

Class 333 Any sewing item, eg. clothing, cushion, quilt, etc

Class 334 Wool or yarn craft - eg weaving, felting, knitting, crochet, macrame

Class 335 Embroidery/Needlework

Class 337 An object made of metal, wood or clay
Item must be portable and easily carried by one person.

Class 338 Jewellery Item

Class 339 Any other craft not mentioned

**Dawn Stowell Trophy - Most Outstanding Handcraft
Outstanding Handcraft Exhibit - Secondary**

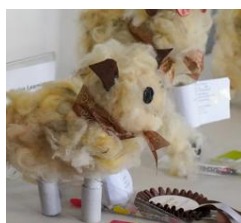
Thorn Trophy - Most Points

Inclusive Learning

Children & Youth Inclusive Learning

Class 340 Handcraft (any craft work)

Class 341 Art (any style, any medium)



Adult Inclusive Learning (Ages 18+)

Class 350 Art (any style, any medium)

Class 351 Handcraft (any craft work)

Cookery & Sugar Art

Baking to be displayed on a firm base covered with a clear cover.

**Trophies, Rosettes and Ribbons not to be uplifted until exhibit collection on Sunday at 3.30pm
Judges Choice Prize.**

Preschool age groups

Class 400 1 x Decorated Wine Biscuit

Primary School Cookery Years 1 & 2

Class 401 1 x Decorated Wine Biscuit

Class 402 1 x Pikelet Art

Class 403 1 x Cup Cake Decorated
(Home made)

Class 404 3 x Homemade sweets

Primary School Cookery Years 3 & 4

Class 405 1 x Decorated Wine Biscuit

Class 406 1 x Pikelet Art

Class 407 1 x Cup Cake Decorated (Home made)

Class 408 Class 404 3 x Homemade sweets

Primary School Cookery Years 5 & 6

Class 409 1 x Decorated Wine Biscuit

Class 410 1 x Pikelet Art

Class 411 1 x Cup Cake Decorated (Home made)

Class 412 3 x Homemade sweets

Mrs P Jellyman Trophy - Most Points Primary Cooking

Outstanding Cooking Exhibit - Primary

Intermediate School Cookery

Class 413 3 x Pikelets

Class 414 3 x Homemade sweets

Class 415 1 x Cup Cake Decorated
(Homemade)

Outstanding Cooking Exhibit - Intermediate

Secondary School Cookery

Class 416 3 x Pikelets

Class 417 3 x Homemade sweets

Class 418 1 x Cup Cake Decorated (Homemade)

Outstanding Cooking Exhibit - Secondary

Open Section

Class 419 Decorated Cake

Open to any school age student

Webby Cup - Junior Cake Decorating – Open

Lesley Morris Trophy - Judges Choice

Inclusive Learning

Sponsored by IHC Nelson

Class 420 1 x Decorated Biscuit

Class 421 1 x Cup Cake Decorated

Stop-Motion Animation

VENUE: Waimea Lounge

ENTRIES CLOSE: 5pm Friday 7th November. No late entries will be accepted.

CONDITIONS OF ENTRY: This competition is open to everyone except competition judges and their immediate family.

Stop motion is an animation technique in which a camera is repeatedly stopped and started, frame-by-frame, in order to give inanimate objects and figures the impression of movement. Any medium is acceptable for the inanimate objects. Using Stop motion apps like Lego Stop Motion is acceptable.

A maximum of two entries per category is allowed. Footage must be submitted in MP4 format. Up to 2 minutes. No longer than 2 minutes.

Please deliver entries and entry forms to the Nelson A and P office at the Richmond Showgrounds on pendrive with entry form in a named ziplock plastic bag or email via <https://wetransfer.com> and send to manager@richmondpark.nz and for Title put the title of your entry and in message please put the Class number your name, address and email address and phone number.

Pendrives will be available to collect from the Showgrounds office during working hours following the show.

Theme - "Animal Antics" For all classes

Primary School Stop-Motion Animation

Class 600 Student Stop-Motion Animation Year 1 & 2

Class 601 Student Stop-Motion Animation Year 3 & 4

Class 602 Student Stop-Motion Animation Year 5 & 6

Intermediate/Secondary School Stop-Motion Animation

Class 603 Student Stop-Motion Animation - Intermediate

Class 604 Student Stop-Motion Animation - Secondary

Outstanding Animation Exhibit

Overall Champion Student Animation



Children's Photography

VENUE: Waimea Lounge

ENTRIES CLOSE: 5pm Friday 7th November. No late entries will be accepted.

CONDITIONS OF ENTRY: This competition is open to everyone except competition judge(s) and their immediate family.

Please take care to enter your image in the correct class.

The exposure of the image must be the original work of the entrant.

Prints may be trade processed and may be digitally enhanced.

No watermarks on photos allowed

A maximum of five (5) entries per category is allowed.

Entries are to be 6" x 4" NOT MOUNTED.

No entry that has previously won a prize at the Nelson A & P Show is eligible for entry.

An image may be entered once only in either Adults, Children's or Horticultural sections, not multiple.

Please deliver entries, entry forms to the Nelson A & P office at the Richmond Showgrounds.

Photos must be unframed; i.e. no glass: Class and title, name, address, phone number, corresponding to the entry form must be printed clearly on the back of photo, top centre. All exhibits are to be packed securely and marked "Photography Section".

Old, marked or dirty images will not be accepted.

Entries that do not meet these conditions will be disqualified.

Exhibits and prizes can be collected after 3.30pm on the Sunday or from the A & P office during the week after the show.

Exhibitors requiring their entries to be returned by mail or courier must include return postage or courier tickets/bags with their entries.

The utmost care will be taken by the organisers but the A & P Association do not accept any responsibility for damage to exhibits while in their possession

Please note: "Portrait" is a photo where a person or an animal is the focus of the photo (usually close up), not the orientation of the photo. **"Landscape"** is a photo of a landscape, not the orientation of the photo. **"Movement"** - self explanatory **"Open"** - can be anything

Pre-School Photography

Class 500 Open

Primary School Photography Years 1 & 2

Class 501 Open

Class 502 Portrait

Class 503 Landscape

Primary School Photography Years 3 & 4

Class 506 Open

Class 507 Portrait

Class 508 Landscape

Class 509 Creative

Primary School Photography Years 5 & 6

Class 511 Open

Class 512 Portrait

Class 513 Landscape

Class 514 Creative

Outstanding Photography Exhibit - Primary

Intermediate School Photography

Class 516 Open

Class 517 Portrait

Class 518 Landscape

Class 519 Action Shot

Class 520 Creative

Class 521 Close Up

Outstanding Photography Exhibit - Intermediate

Secondary School Photography

Class 523 Open

Class 524 Portrait

Class 525 Landscape

Class 526 Action Shot

Class 527 Creative

Class 528 Close Up

Outstanding Photography Exhibit - Secondary

Overall Champion Photography Exhibit

Reid Trophy - Overall Champion

Most Points Student Photography

